

Zusatzstoffe *Food Additives*

Allergene *Allergenes*



1
Farbstoff
colouring



2
Konservierungsstoff
preservatives



13
Krebstiere
shellfishes



14
Eier
eggs



22
Erdnüsse
peanuts



3
Antioxidationsmittel
anti-oxidiser



4
Geschmacksverstärker
flavour enhancers



23
Soja
soy



24
Milch/Milchprodukte
milk or milk products



25
Schalenfrüchte/
alle Nussarten
nuts or pulse

H = Haselnuss/*hazelnut*
W = Walnuss/*walnut*
P = Pistazie/*pistachio*
Mn = Mandel/*almond*
C = Cashew/*cashew*
Ma = Macadamia/*macadamia*
PK = Pekanuss/*pecan*



5
geschwefelt
treated with sulphur



6
geschwärzt
blackened



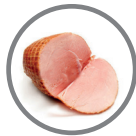
26
Sellerie
celery



27
Senf
mustard



7
gewachst
waxed



8
Phosphat
phosphate



28
Sesamsamen
sesame seeds



29 Konz. > 10mg
Schwefeldioxid
sulfur dioxide



30 Konz. > 10mg
Sulfite
sulfites



9
Süßungsmittel
sweetener



10
Phenylalanin
phenylalanine



31
Lupine
lupine



32
Weichtiere
molluscs



34
Gluten
gluten
W = Weizen/*wheat*
G = Gerste/*barley*
H = Hafer/*oats*
R = Roggen/*rye*
D = Dinkel/*spelt*



11
Alkohol
alcohol



18
Gelatine
gelatin
18 S = Schwein / *pork*
18 R = Rind / *beef*



35
Fisch
fish